



WIFI TUTORIAL

August 18, 2020

THE CITY UNIVERSITY OF NEW YORK
New York City College of Technology
Architectural Technology Department

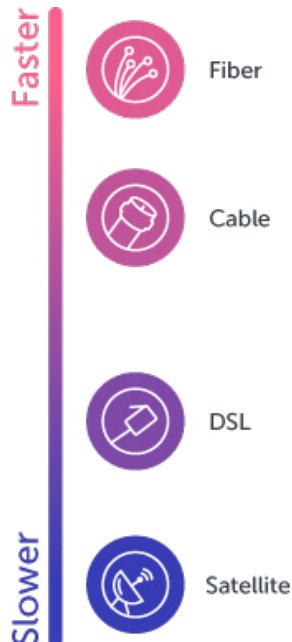
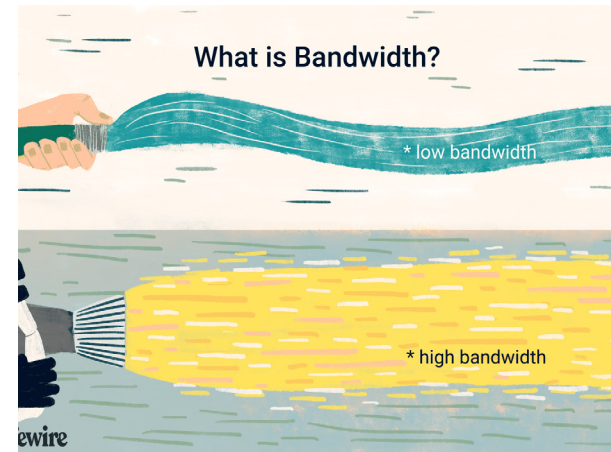


Fuse Lab

THINGS WHICH AFFECT YOUR INTERNET SPEED

Every device that is using your home internet is using some of your internet bandwidth. Bandwidth is the maximum amount of data transmitted over an internet connection in a given amount of time. Bandwidth is expressed as a bitrate and measured in bits per second (bps). For example, you need a Bandwidth of 2.0 Mbps up and down to use Zoom with a single screen

An internet connection with a larger bandwidth can move a set amount of data (say, a video file) much faster than an internet connection with a lower bandwidth

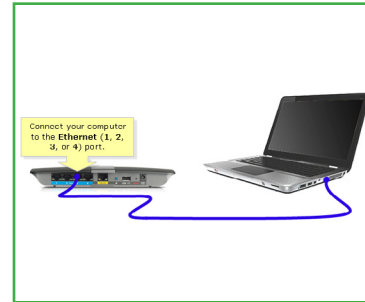


On the other hand, your internet speed is how fast you receive the information that is sent to your device. Suppose your internet speed is 20 Mbps, there are 4 family members who are using the connection, the 20 Mbps is divided between these four users.

Before you try to improve your WI-FI speed, make sure you are getting the internet speed you pay for. [TEST YOUR INTERNET SPEED HERE](#).

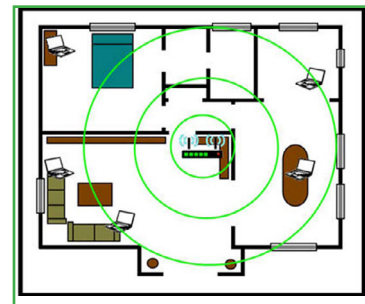
To Improve your WI-FI speed try the tips below

Make sure you have a decent modem/router. All modem/routers are not the same. Talk to your internet provider.



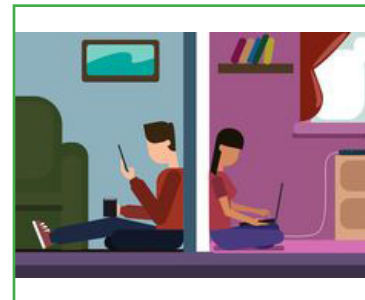
If possible, connect your device directly to the modem/router using an ethernet cable.

Connect to a 5G network if available



If possible, place the modem/router at the center of your house away from walls and obstructions.

Use a WI-FI booster/extender [click here](#) for more information



Limit the number of devices using the wi-fi. Make sure your neighbor is not using your WI-FI.

Keep your router away from your TV and microwave.



Get a Wi-Fi Antenna, [click here](#) for more information.

ZOOM REQUIREMENTS

- 2.0 Mbps up and down for single screen
- 2.0 Mbps up 4.0 Mbps down for dual screen
- 2.0 Mbps up 6.0 Mbps down for triple screen
- For screen sharing only: 150-300kbps
- For audio VoIP: 60-80kbps

MINIMUM OS REQUIREMENTS:

- Mac OS X with Mac OS 10.10 and higher
- Windows 7 and higher

HARDWARE REQUIREMENTS:

- 2.5 GHz Dual Core Intel Core i5 and higher desktop CPU (single screen)
- 2.8 GHz Quad Core Intel Core i7 and higher desktop CPU (dual or triple screen)
- Dual bank RAM for better performance