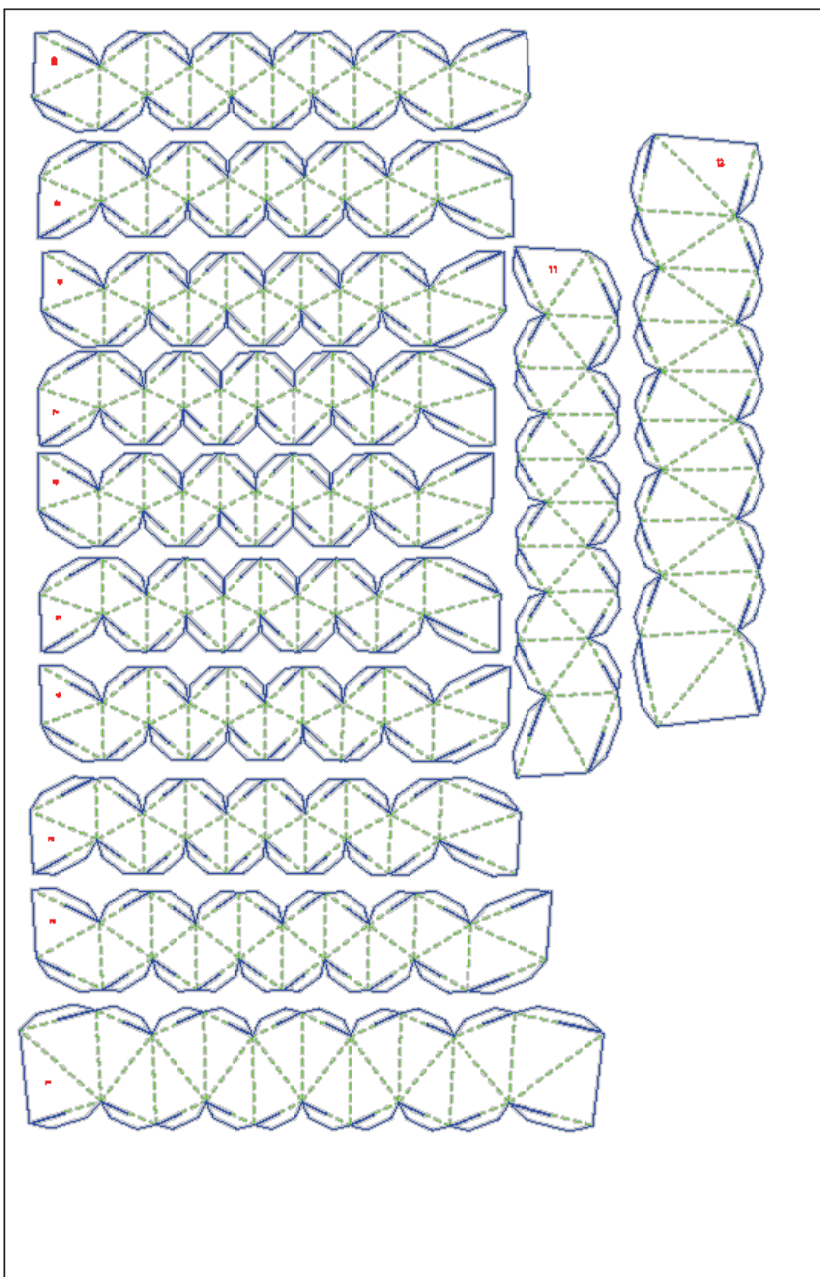


# NYCCTfab

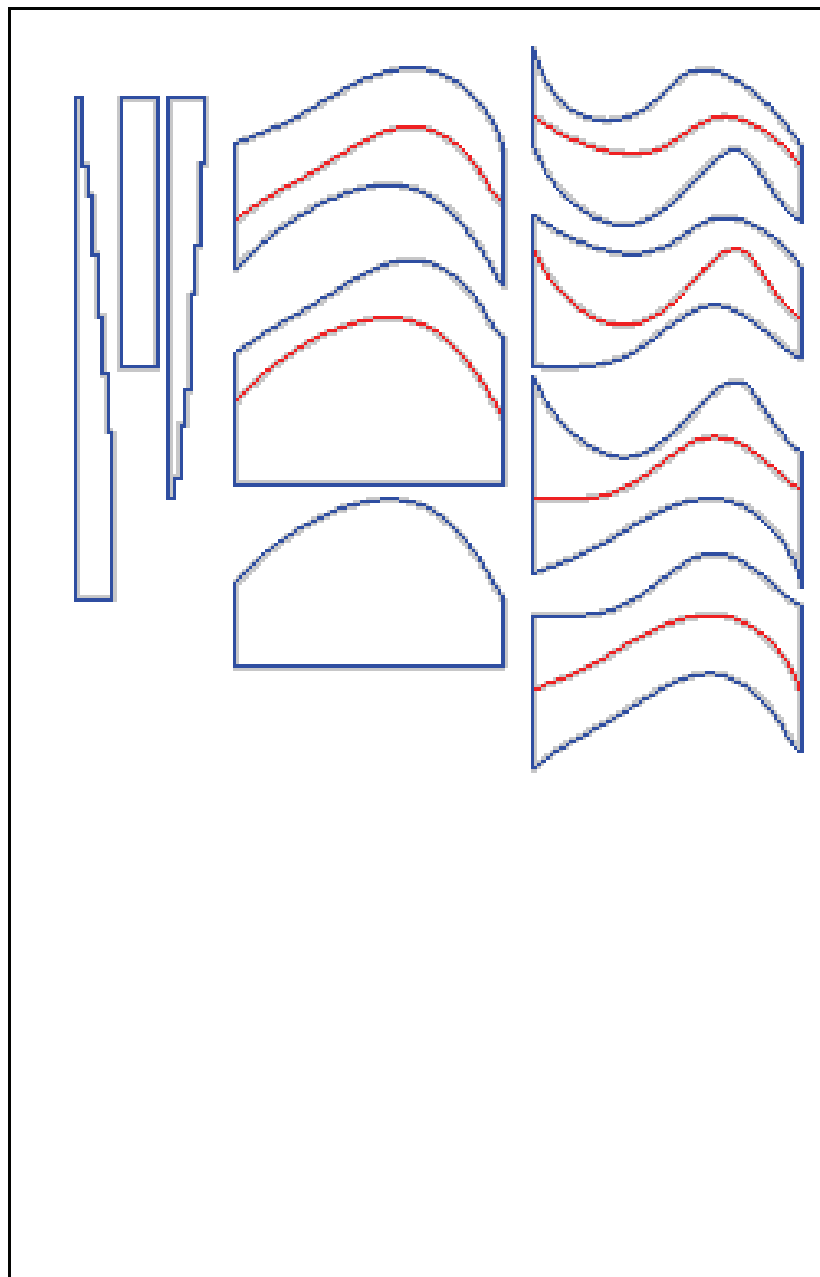
# LASER CUTTING

## Appropriate Use of Laser Cutters

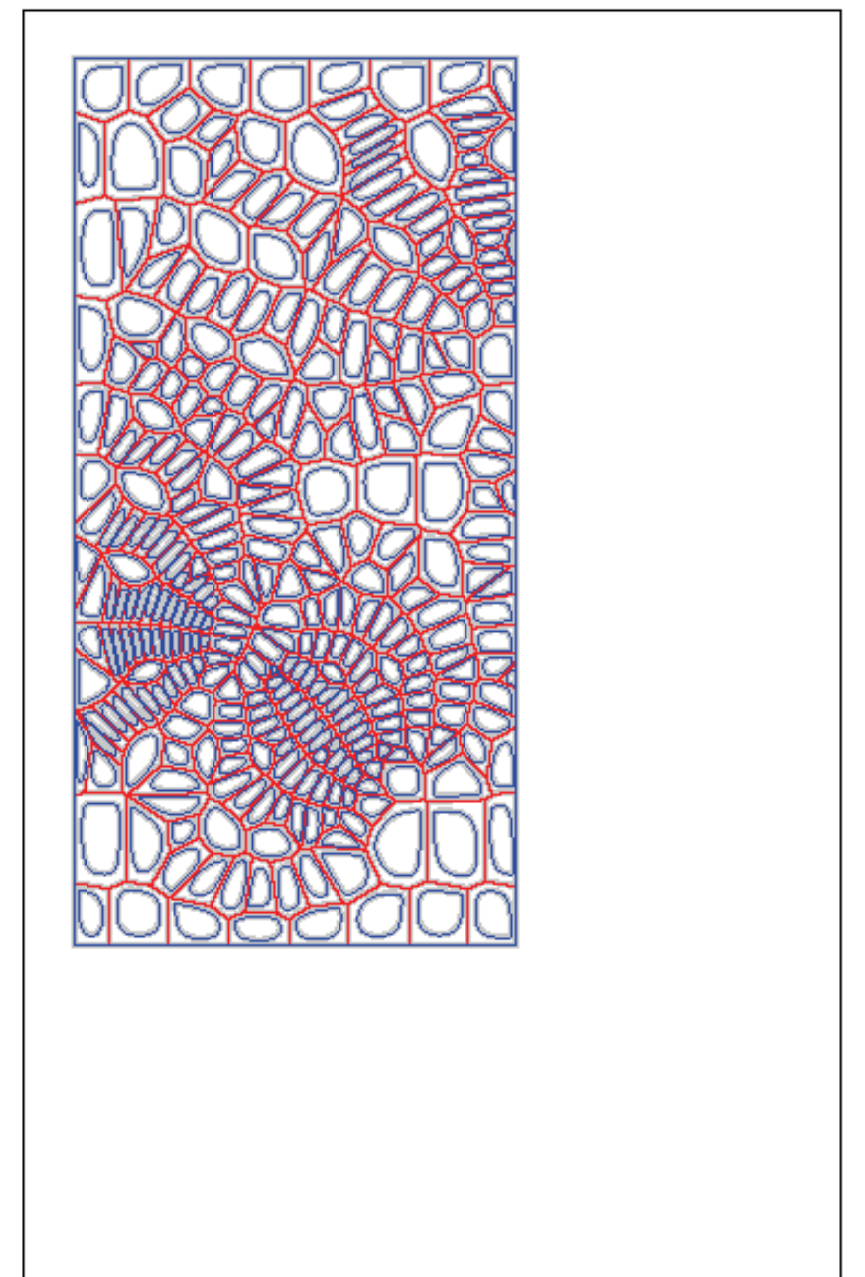
### APPROPRIATE USE



**Complex Geometry**

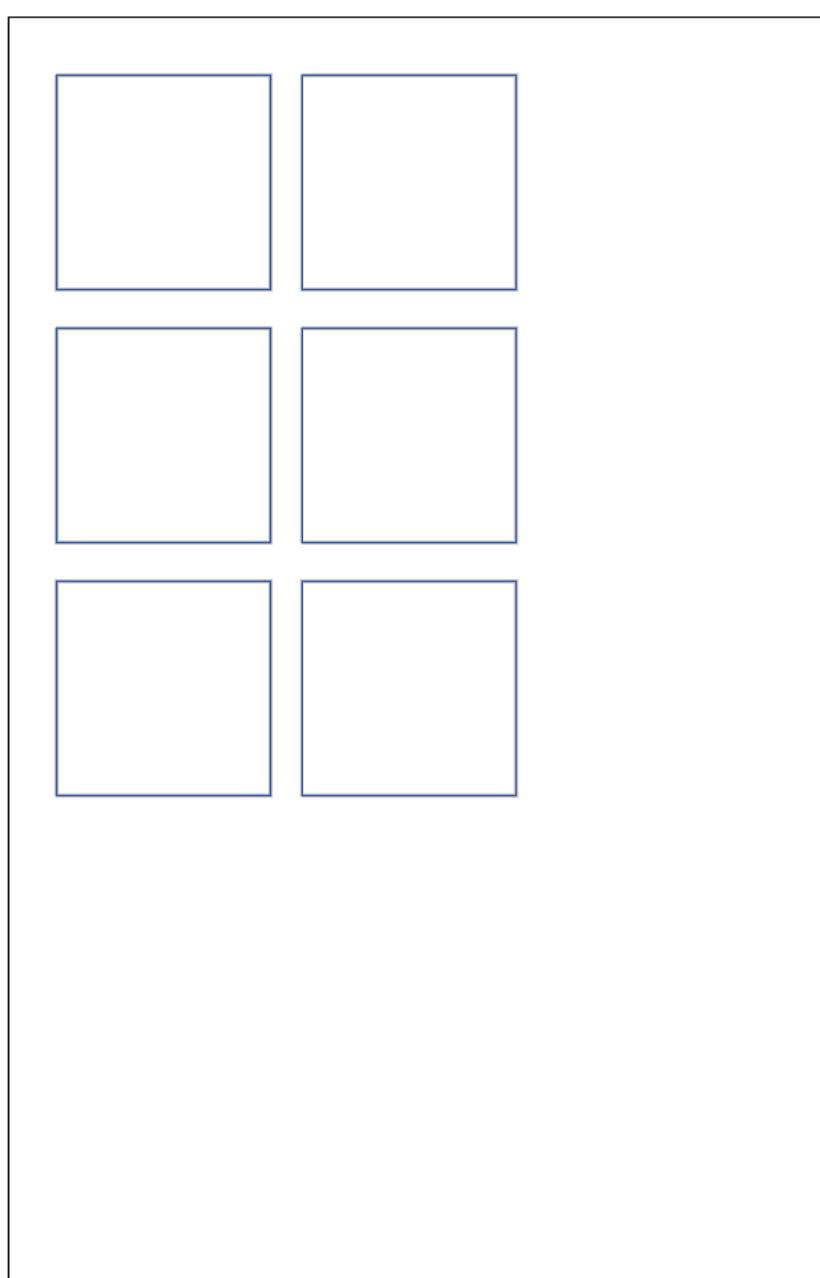


**Hollow Topo Model**

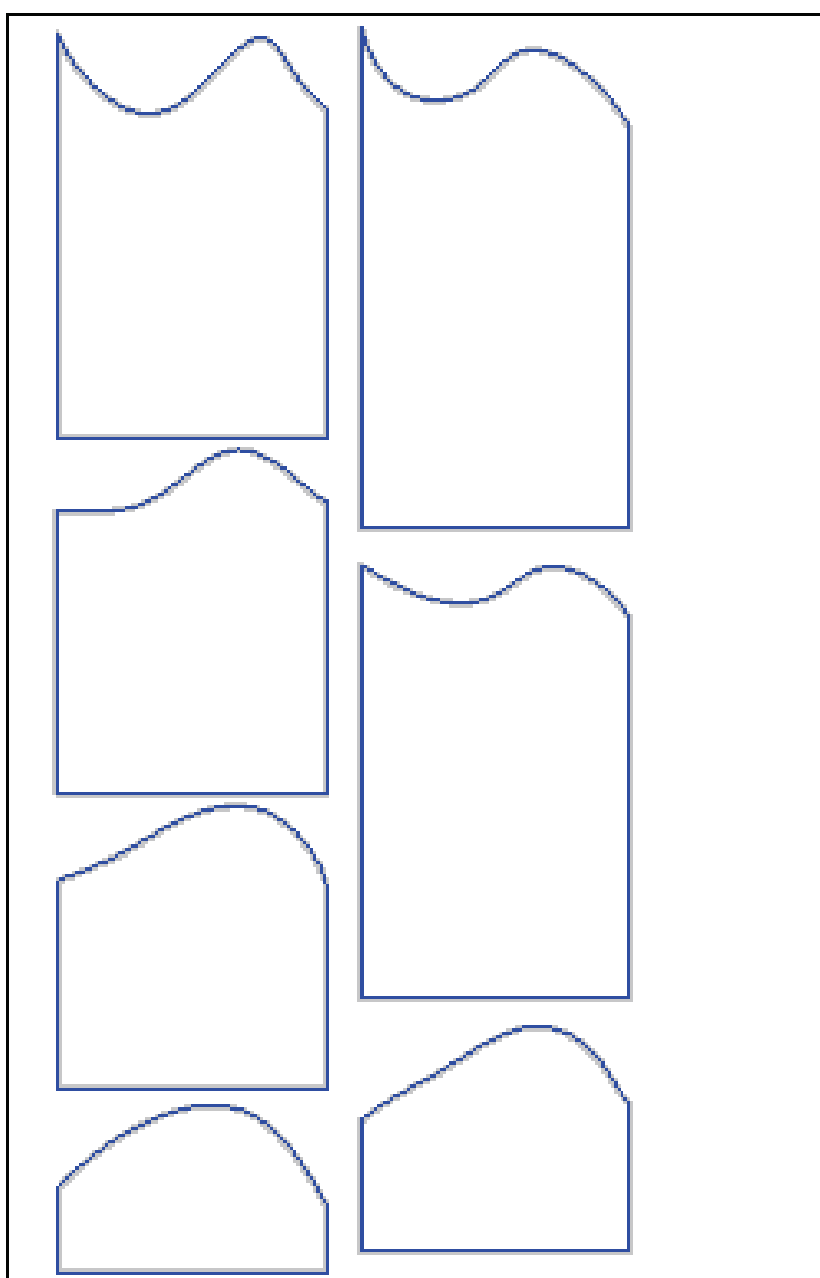


**Complex Facade**

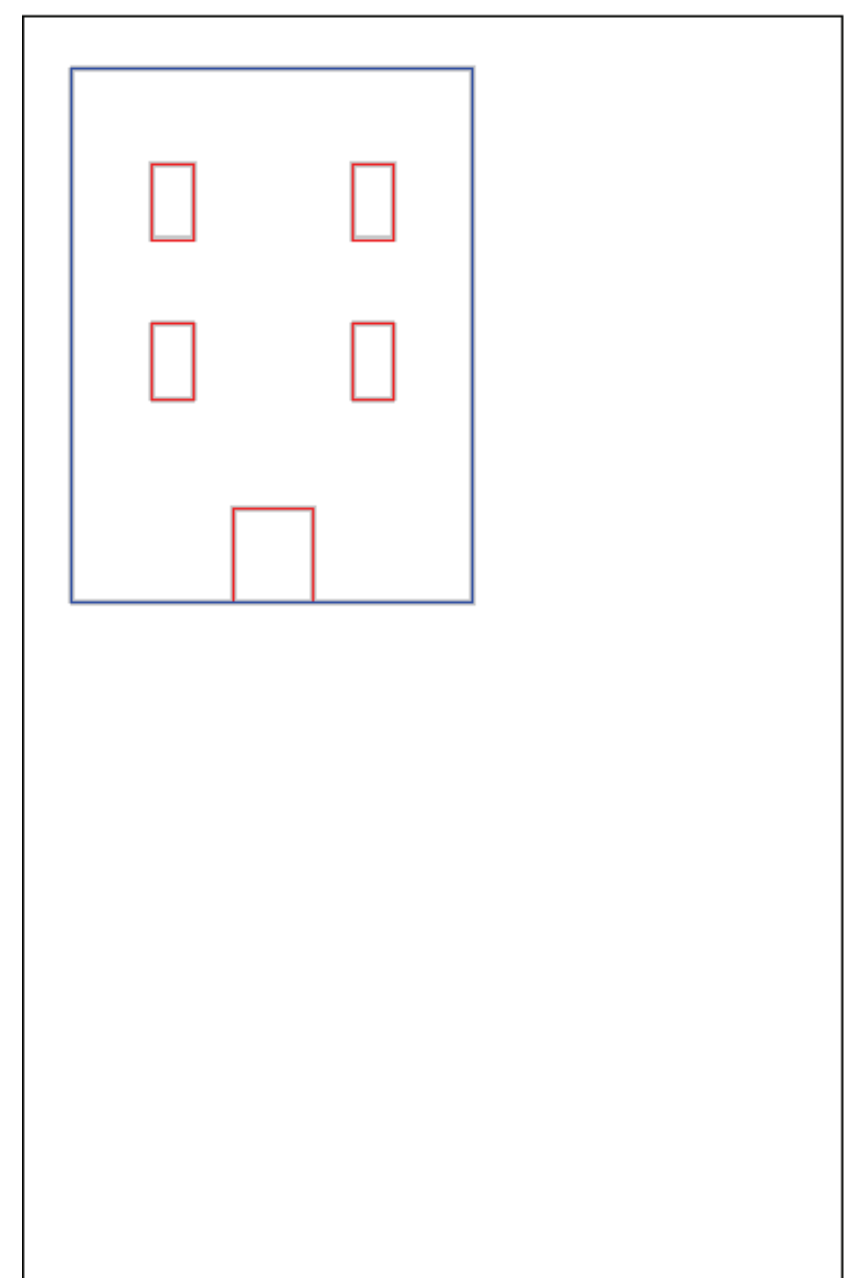
### INEFFICIENT OR INAPPROPRIATE USE



**Simple Geometry**  
**Can Be Cut By Hand**



**Solid Topo Model**



**Simple Facade**